

# CECIL WRIGHT

FANATICAL ABOUT YACHTS



SPACE

# SPACE

**BUILDER:** Feadship  
**YEAR BUILT / REFIT:** 2007 (2018)  
**LOA:** 44.65m / 146' 5"



# CECIL WRIGHT

FANATICAL ABOUT YACHTS



Exterior

# SPACE

44.65M LEADSHIP



Main Deck Lounge

# CECIL WRIGHT

FANATICAL ABOUT YACHTS



Main Deck Lounge

# SPACE

44.65M FEADSHIP



Master Suite

# CECIL WRIGHT

FANATICAL ABOUT YACHTS



Master Bathroom

SPACE  
44.65M FEADSHIP



Guest Double Cabin



# CECIL WRIGHT

FANATICAL ABOUT YACHTS



Guest En-suite

# SPACE

44.65M FEADSHIP



Guest Twin Cabin

# CECIL WRIGHT

FANATICAL ABOUT YACHTS



Guest En-suite

# SPACE

44.65M FEADSHIP



Owner's Office

# CECIL WRIGHT

FANATICAL ABOUT YACHTS



Bridge Deck Lounge

# SPACE

44.65M LEADSHIP



Bridge Deck Dining

# CECIL WRIGHT

FANATICAL ABOUT YACHTS



Bridge Deck Dining

# SPACE

44.65M FEADSHIP



Bridge



# CECIL WRIGHT

FANATICAL ABOUT YACHTS



Sun Deck Dining

# SPACE

44.65M FEADSHIP



Sun Deck

# CECIL WRIGHT

FANATICAL ABOUT YACHTS



Sun Deck Jacuzzi

# SPACE

44.65M FEADSHIP



Galley

# CECIL WRIGHT

FANATICAL ABOUT YACHTS



# SPACE

44.65M FEADSHIP



Swim Platform

# CECIL WRIGHT

FANATICAL ABOUT YACHTS



Exterior

# SPACE

44.65M FEADSHIP



Exterior



# CECIL WRIGHT

FANATICAL ABOUT YACHTS



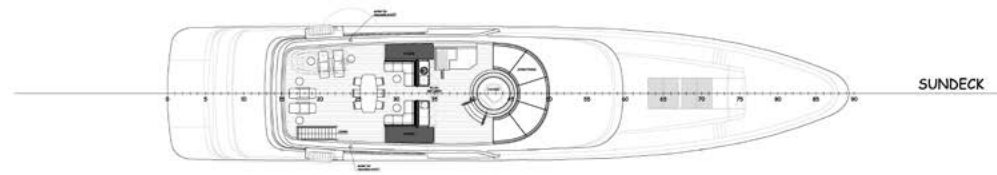
Exterior

# SPACE

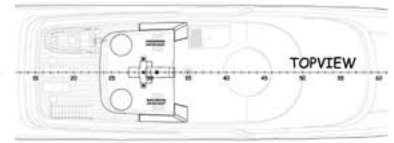
44.65M FEADSHIP



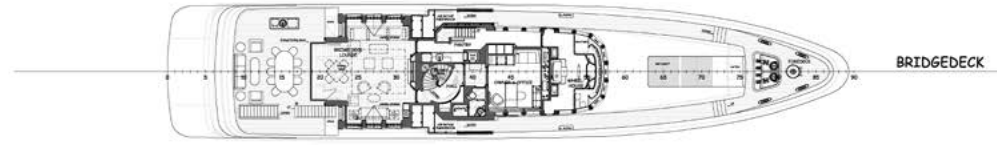
PROFILE



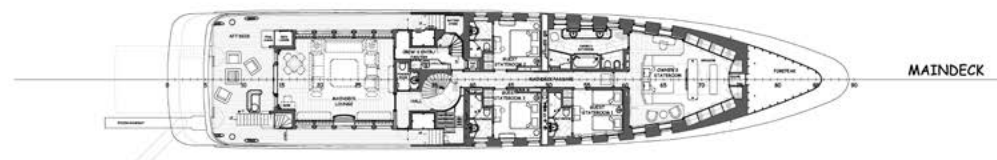
SUNDECK



TOPVIEW



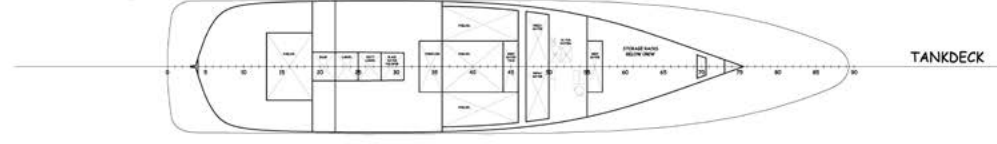
BRIDGEDECK



MAINDECK



LOWERDECK



TANKDECK

## MAIN SPECIFICATION

### General

|                           |  |
|---------------------------|--|
| Name                      | SPACE  |
| Builder                   | Feadship, Royal Van Lent, Kaag (project 796)           |
| Year Built (&refit years) | 2007 (2018)  |
| Type                      | Full Displacement, Twin Screw Diesel Motor Yacht       |
| Classification            | Lloyds, 100A1 SSC, YACHT, Mono, G6, LMC, MCA compliant |
| Flag                      | Cayman Islands   |
| Designer                  | Studio De Voogt / Sinot Design                         |
| Naval Architect           | De Voogt Naval Architects                              |
| Interior Designer         | Donald Starkey / Peter Marino                          |
| Hull & Superstructure     | White  |
| Bootstripe                | Blue   |

### Capacities

|                      |  |
|----------------------|--|
| Cruising Speed       | 12.0 knots   |
| Maximum Speed        | 14.5 Knots   |
| Range                | 1,900 nm @ 13.0 knots<br>2,600 nm @ 12.0 knots<br>3,500 nm @ 11.0 knots<br>4,500 nm @ 10.0 knots |
| Fuel Capacity        | 40,000 litres, 10,567 USG  |
| Fresh Water Capacity | 32,000 litres, 8,453 USG   |
| Black Water Capacity | 2,700 litres, 976 USG  |
| Grey Water Capacity  | 6,950 litres, 1,835 USG  |

|                   |  |
|-------------------|--|
| Lube Oil Capacity | 2,250 litres, 594 USG  |
| Dirty Lube Oil    | 1,800 litres, 475 USG  |
| Fuel Consumptions | 14.5 knots maximum, 400l/hr<br>12.0 knots, cruising, 200 l/hr<br>10.0 knots, economical, 95 l/hr<br>(Total consumption excludes 25l/hr for generators) |

### Construction

Steel hull, aluminium superstructure, teak laid decks

### Dimensions

|               |                        |
|---------------|------------------------|
| Length O.A    | 44.65m / 146'6"        |
| Length W. L   | 38.65 metres / 126' 9" |
| Beam          | 9.20 metres / 30' 2"   |
| Draft         | 2.70 metres / 8' 10"   |
| Gross Tonnage | 499 GRT                |
| Net Tonnage   | 149 NT                 |
| Displacement  | 472 MT                 |

### Sleeping

|        |  |
|--------|--|
| Guests | 8 guests in 4 cabins<br>Note that Owner's office could be converted into 5th cabin (with en-suite) |
| Crew   | 9 in 5 cabins  |

## MACHINERY

### General

Engines MTU  
 Engine Model 2 x 12V2000M70 12 cylinders  
 Engine hours Starboard, 6,000 hours (Sept-2019)  
 SN: 535105320  
 Port: 6,000 hours (Sept-2019)  
 SN: 535105321

Fuel AGO  
 Gearboxes 2 x ZF type 2560 Gear Ratio 5,043:1  
 Steering Rolls Royce Teijford 1 x system  
 + emergency

Rudder Angle Indicators 2 x 35° Anschutz  
 Stabilisers Naiad 520; composite fins of 2.3m<sup>2</sup>  
 Optimized for roll stabilisation underway  
 and at anchor

Propellers 2 x Wartsila 1.5m diameter, high skew,  
 class S, dynamically balanced

Shafts 2 x Rubber Design 140-OL.S.tl.C  
 oil lubricated shafts, supported by  
 3 bearings each

**Generators**  
 Main Generator 2 x Caterpillar C9 / 150 kW / 187.5 kVA,  
 Main Generator hours S1 – continuous, power factor of 0.8,  
 19,000 hours (Sept-2019) 3 x 400 Volt, 50 Hz, 1500 rpm  
 Serial: C9A00423 & C9A00423,

### Batteries

Electricity Mastervolt  
 Shore Power Wesemann isolating transformer 400V+/- 5%  
 250KVA 3 phrase 50Hz (only)  
 Serial: 057251010001  
 Batteries 24V Odyssey PC2150 (new as 10Yr LR)

### Air Conditioning

Make Heinen en Hopman 120-05-083TW

### Other Machinery

Water makers 2 x HEM 30 Duplex, 2 x 12,960 ltr/day  
 Bow Thruster Jastram BU 10F 75 kW, Serial no: BU3468  
 Fuel Filters SEPAR Duplex  
 Fuel Oil Separator 1 x Westfalia OTC 2-02-137  
 Bilge Water Separator R.W.O. SKIT-S-DE with capacity of  
 approx. 250 l/hr  
 Bilge Pump 2 x Johnson FRES65-115  
 Boilers 1 x NIBE SPIS 500 with a capacity of 500 litres  
 Sewage treatment HAMANN Min Compact HL-CONT 6695  
 WCs EVAC VT900

## ACCOMMODATION

### Configuration

|       |  |
|-------|--|
| Owner | Full beam Stateroom forward with dressing area, en-suite bathroom with bathtub and separate shower, 2 sinks and separated toilets with bidet<br>Separate Owner's office on the bridge deck |
| Guest | 2 x Double cabins with en-suite shower room<br>1 x Twin cabin with en-suite shower room  |
| Crew  | 1 x Double Captain's cabin with en-suite shower room<br>4 x Twin upper and lower berth cabins with en-suite shower room  |

### Owner's Suite

Owner's suite is located forward on the main deck, decorated in a classic contemporary style with a mixture of wood, leather panelling and modern features. It boasts a super king bed, spacious bathroom, his and hers heads, bidets, shower and bathtub, underfloor heating and heated towel rails.

### Guest Accomodation

Three further guest cabins are located on the main deck. There is a twin cabin on the port side aft of the Owner's Suite followed by two double cabins, one to port and the other to starboard. Like the Owner's cabin they too are furnished in classic contemporary style with a mixture of wood and leather panelling with modern features. Both doubles have a queen sized bed, an en-suite bathroom and toilet.

On the Bridge deck, in her current configuration, there is an Owner's Office which could be converted into a 5th cabin – en-suite shower room already installed and functional.

### Guest Areas

Main Salon on main deck level and has central seating area and a card table.

Main deck aft has a seating area (non-fixed furniture) and a bar.

On the bridge deck, there is a dining and entertaining area.

The Bridge deck aft has large oval dining table, barbecue and seating area.

There is a large Sundeck with additional dining options, seating, loose sun loungers and half-moon sun pads surrounding the circular Jacuzzi.

### Crew

Captain's Cabin is located on the lower deck

Crew cabins are also on the lower deck

Galley is on the lower deck

Crew Mess is also on the lower deck

### Ship's Safe

1 in Master's Suite

1 in Captain's Cabin

## COMMUNICATIONS & NAVIGATION EQUIPMENT

### Communications Equipment

|                  |  |
|------------------|--|
| SatCom           | Seatel 4006/9 VSat<br>1 x Sailor Satcom-C H2095C 10,4" TFT display, printer unit   |
| Radio Telephones | 1 x Sailor 4000 SSB Marine radio telephone, receiver 150W PEP, 10m antenna<br>1 x Sailor RT-4800 VHF radio telephone, handset with cradle, speaker for wheelhouse, slave handset and speaker in crew mess<br>1 x Sailor RT-5022 DSC simplex/semi duplex VHF radiotelephone with handset and cradle |
| VHF Radios       | 2 x Jotron TR-20 GMDSS 19 channel handheld VHF radios  |
| AIS / GPS        | 1 x Furuno F150 AIS/ GPS system  |
| DGPS             | 1 x Furuno GP-90 DGPS system   |
| GSM              | 2 x Ericsson F251m fixed tri-band cellular terminals   |

### Navigation Equipment

|                            |  |
|----------------------------|--|
| Gyro Compass and Autopilot | 1 x Anschuetz Standard 22G/GM gyro compass with readout on conning display and repeated in the aft peak<br>1 x Anschuetz NautoPilot 2015 automatic pilot                           |
| Chart Plotter              | 1 x Transas NS-3000 chart plotter with 19" colour TFT display Hatteland, ARPA overlay, tracker ball and cordless keyboard, UPS and TV interface                                    |
| Echo Sounder               | 1 x Furuno FCV 852L echo sounder, dual frequency (50/200kHz) transducer, water temperature sensor and data output to conning screen  |
| Navtex                     | 1 x Furuno NS700A navtex receiver  |
| Speed log                  | 1 x Furuno DS-80 Doppler log   |
| Radars                     | 2 x Furuno FAR 2117 (1 x 230VAC, 1 x 24VDC) with 12kW X-band transceiver, 19" TFT display Hatteland, scanner unit, ARPA module, Gyro.log interface and interfacing for ECS and GPS |
| Anemometer                 | 1 x Furuno RO ply anemometer for true and relative wind, barometric pressure, air temperature on the conning display   |
| Compass                    | 1 x Observator MK4 magnetic compass with Anschuetz flux gate   |

## DECK EQUIPMENT

|                 |   |
|-----------------|---|
| Anchor Windlass | 2 x Staalart dual rotation and two speed control  |
| Capstans        | 2 x Staalart with dual rotation and single speed  |
| Boarding Ladder | 1 x removable polished stainless steel and teak steps swimming ladder for mounting at the swim platform   |
| Riviera Gangway | Electric / hydraulic driver Riviera gangway, starboard aft. Folding type with max outreach of approx. 4m and width of approx. 600mm, rotate sideways through an angle of 45° and raised / lowered through an angle of 15° from the horizontal |
| Anchors         | 2 x 385kg type balanced Pool high holding power galvanized bow anchors  |
| Anchor Chain    | 2 x 165m 22mm Grade U2 galvanized stud link chain (replaced 2018)   |
| Ship's Bell     | 1 x Polished stainless-steel ship's bell of 300mm   |

## ENTERTAINMENT & IT EQUIPMENT

### General

|                      |   |
|----------------------|---|
| VSat / Wi-Fi / areas | 1 x SeaTel 4006 KU Band<br>4 x Pepwave 4G routers with amplifier<br>Ciso Wi-Fi throughout the entire vessel |
| IT Server            | HP windows Server 2008 + Mac-mini running   |

AV services

### Audio & Visual System

1 x 4004 Seatel TV antenna  
An AV system based on a centralized system containing a Kaleidescape AV on demand system (storage of 360 DVDs of 9000 CDs), satellite TV (SKY UK boxes) centre DVD/CD player. Sources, amplifiers, matrix switchers and control processors installed in 2 x fixed racks in the rack space in main deck hall.  
iPad control throughout and Apple TV in Upper and Main Lounge.  
Areas with Audio on demand, (AOD) Video on demand (VOD), Central Audio & Video, TV monitor, speakers and Crestron touch panel are guest staterooms, owner's office on bridge deck, owner's stateroom and main deck lounge.  
The main deck aft deck and bridge deck aft deck is slaved from lounge with independent volume control.

**ENTERTAINMENT & IT EQUIPMENT**

**Interior Guest Areas**

Owner's Stateroom  
1 x Samsung 37" LED TV  
1 x iPad connecting to the TV with a Sky, Kaleidescape, Spotify, Blu-ray, Crestron

Apps  
Wi-Fi reception

Owner's Office  
1 x Panasonic 32" TV  
1 x iPad connecting to the TV with a Sky, Kaleidescape, Spotify, Blu-ray, Crestron Apps  
Wi-Fi reception

Guest Cabins  
1 x Samsung 40" LED TV  
1 x iPad connecting to the TV with a Sky, Kaleidescape, Spotify, Blu-ray, Crestron Apps  
Wi-Fi reception

Main Deck Salon  
1 x Samsung 55" LED TV  
1 x iPad connecting to the TV with a Sky, Kaleidescape, Spotify, Blu-ray, Crestron Apps  
Wi-Fi reception

Bridge Deck Salon/Dining  
1 x Samsung 55" LED TV  
1 x iPad connecting to the TV with a Sky, Kaleidescape, Spotify, Blu-ray, Crestron Apps  
Wi-Fi reception

**Exterior Guest Areas**

Main Deck Aft  
1 x iPad, Kaleidescape, Blu-ray, Crestron Apps  
Wi-Fi reception

Bridge Deck Aft  
1 x iPad, Kaleidescape, Blu-ray, Crestron Apps  
Wi-Fi reception

Sun Deck Aft  
1 x iPad, Kaleidescape, Blu-ray, Crestron Apps  
Wi-Fi reception

Crew Office Equipment  
2 x Apple iMac 21" Desktop computer  
3 x 15' laptops  
3 x HP printer / scanner

**Interior Crew Areas**

Captain's Cabin  
1 x Samsung 40" LED TV

Crew Mess  
1 x Samsung 50" TV



## GALLEY & LAUNDRY EQUIPMENT

|                             |   |
|-----------------------------|---|
| Main Galley                 | <ul style="list-style-type: none"> <li>1 x Induction 4 range hob</li> <li>1 x Miele H6860BP Oven</li> <li>1 x Convothem combi-oven</li> <li>1 x Miele H 4020 BM RVS microwave</li> <li>1 x Smitsair hood</li> <li>2 x Electrolux 400 ltr freezer</li> <li>1 x Miele G 7856 AE F-GE dishwasher</li> </ul> <p><b>Additional equipment in crew passage:</b></p> <ul style="list-style-type: none"> <li>1 x Electrolux 650 ltr freezer</li> <li>2 x Electrolux 400 ltr refrigerators</li> <li>2 x Electrolux 400 ltr freezer</li> </ul> |
| Pantry Main Deck            | 1 x wine fridge   |
| Bar Main Deck               | 1 x Miele K621Ui undercounter refrigerator  |
| Outside Cabinet Bridge Deck | <ul style="list-style-type: none"> <li>1 x Miele K621Ui undercounter refrigerator</li> <li>1 x Hoshizaki IM30CLE ice-cube maker</li> </ul>  |
| Pantry Bridge Deck          | 1 x Miele K621Ui undercounter refrigerator  |
| Outside Cabinet Sundeck     | <ul style="list-style-type: none"> <li>1 x Miele K621Ui undercounter refrigerator</li> <li>1 x Hoshizaki IM30CLE ice-cube maker</li> </ul>  |
| Laundry                     | <ul style="list-style-type: none"> <li>3 x Miele PT7136 washer, 5kg capacity</li> <li>3 x Miele PW6065 Dryer, 5kg capacity</li> </ul>   |

|           |   |
|-----------|---|
| Crew Mess | <ul style="list-style-type: none"> <li>1 x Miele K621Ui undercounter refrigerator</li> <li>1 x Miele G 7856 AE F-GE dishwasher</li> </ul> |
| Other     | 1 x HML KE-100 dumbwater 100kg (dimensions width 500mm x depth 600mm x height 600mm) serving lower deck, main deck and bridge deck.       |

## TENDERS AND WATERSPORTS EQUIPMENT

|                         |  |
|-------------------------|--|
| Guest Tender            | 1 x 7m Nautica Tender with enclosed protection, D3 engine 35 knots for 8 guests & 2 crew   |
| Rescue Tender           | Position available not on board  |
| Water Toys              | Paddle boards, skis etc, inflatables   |
| Watersports Accessories | Masks, snorkels, diving equipment, jackets etc   |
| Gym Equipment           | <ul style="list-style-type: none"> <li>1 x Techno Gym Dumbbells 10-20LBS</li> <li>1 x Running Machine</li> <li>1 x Exercise Bicycle</li> <li>1 x Rowing Machine</li> </ul> |

## SAFETY AND SECURITY EQUIPMENT

### Safety

|                 |   |
|-----------------|---|
| Immersion Suits | 22 x Adult / 4 x Child  |
| Life jackets    | 24 x Adult / 4 x Child  |
| SART            | 2 x Jotron Tron-Sart Rescue SART                                  |
| EPIRB           | 2 x Sailor 406Mhz EPIRB   |
| Life Rings      | 2 x standard life rings with line thrower and light 2 x with line |
| Line Thrower    | 4 x Line thrower 250m   |
| EEBD            | 1 x Engine Room   |
| Life Rafts      | 2 x RFD Surviva 25; 25man with SOLAS A                            |

### Fire Fighting

|                      |  |
|----------------------|--|
| Fire Fighting System | 1 x electrical self-priming firefighting pump installed in engine room<br>Following connections from the fire main to the following chromed hydrants with storz connection nok 52:<br>2 in engine room, 1 on foredeck, 1 maindeck midships, 2 main deck sides, 1 bridge deck and 1 sundeck<br>A firefighting hose of 18m with Ajax no. 1 nozzle stored close to each hydrant<br>Hi Fog interior and Novec Gas in Engine Room |
| Fixed Fire System    |  |

### Fixed Emergency Pump Extinguishers

|                               |
|-------------------------------|
| Diesel powered                |
| 18 x Foam                     |
| 4 x CO <sub>2</sub>           |
| 3                             |
| 3 x full BA Kits with 6 tanks |
| 3                             |

### Fire Blankets

### BA

### Fire Fighting Suits

### Medical

#### Stretchers

#### Eyewash Station

#### Defibrillator

#### Medical Kits

#### Eyewash station

|   |
|---|
| 1 back support  |
| 1 x Global Medkit 20 – MedAire                                |
| 1 x with adult & child pads                                   |
| MedAire Global 10 with 4 x Oxygen bottles (MY Space contract) |
| x 3   |

### Alarms

|  |
|--|
| UMS alarm system (ADK Lloyds approved with GSM notification) |
|--|

### Security

#### CCTV Details

|  |
|--|
| Dome camera on aft deck, companionway starboard and port and swim platform |
| 2 x 15" LCD monitor with Panasonic quad unit in wheelhouse and crew mess   |
| 2 x Main Deck Aft Cameras  |
| 1 x Lazarette Camera   |

## COMMENTS

The hull and superstructure were repainted at Amico in 2018.

## EXCLUSIONS

A complete list of exclusions is available upon request.

# CECIL WRIGHT

FANATICAL ABOUT YACHTS

## LONDON

73 St James's Street  
London  
SW1A 1PH  
+44 20 7408 1001

Chris Cecil-Wright  
chris@cecilwright.com  
+44 7920 557 837

## MONACO

Le Mirabel  
4 avenue des Citronniers  
MC 98000  
+377 97 98 76 60

Henry Smith  
henry@cecilwright.com  
+33 6 40 62 01 51

## JERSEY

10 Hill St  
St Helier  
Jersey JE2 4UA  
+44 1534 610 420

Matthew Ruane  
matthew@cecilwright.com  
+44 7797 722 024

[www.cecilwright.com](http://www.cecilwright.com)